

ARTCC ARGENTINO AD 2.SAZR

NO VALIDO PARA NAVEGACION REAL. ADAPTADO PARA SU UTILIZACION EN UN AMBITO VIRTUAL
SAZR – SANTA ROSA

AD 2.17 ESPACIO AEREO ATC

Zona de Control:

- | | | |
|-------------------------------------|----------------------------|--------|
| 1. Designación: | Zona de Control Santa Rosa | |
| 2. Límites verticales: | FL 035
GND | |
| 3. Clasificación del espacio aéreo: | C | |
| 4. Distintivo de llamada: | SANTA ROSA TORRE | |
| 5. Altitud de transición: | 3000 FT. | |
| 6. Nivel de transición: | QNH de 977 a 994 | FL 050 |
| | QNH de 995 a 1013 | FL 045 |
| | QNH de 1014 a 1031 | FL 040 |
| | QNH de 1032 a 1050 | FL 035 |

Area de Control Terminal:

- | | |
|-------------------------------------|-------------------------------------|
| 1. Designación: | Area de Control Terminal Santa Rosa |
| 2. Límites verticales: | FL 075
2000 FT |
| 3. Clasificación del espacio aéreo: | C: FL 075 / 2000 FT |
| 4. Distintivo de llamada: | SANTA ROSA TORRE |

AD 2.18 INSTALACIONES DE COMUNICACIONES ATS

SERVICIO	DISTINTIVO DE LLAMADA	FRECUENCIA	OBSERVACIONES
APP	Santa Rosa Torre	118.300	-

AD 2.19 CARTAS AERONAUTICAS

- | | |
|-----------------------|----------------------|
| - Plano de aeródromo: | SAZR.APT |
| - Cartas IAC: | SAZR.IAC NO.1 RWY 19 |
| | SAZR.IAC NO.2 RWY 19 |
| | SAZR.IAC NO.3 RWY 19 |
| | SAZR.IAC NO.4 RWY 19 |
| | SAZR.IAC NO.5 RWY 19 |

(DEJADO EN BLANCO INTENCIONALMENTE)

AD 2.20 REGLAMENTACION DE TRANSITO LOCALES

NORMAS PARA EL MOVIMIENTO Y ESTACIONAMIENTO DE AERONAVES EN LA PLATAFORMA

ESTACIONAMIENTO

Posiciones 1 a 4, aeronaves hasta 20 mts. de envergadura.

Posición 1A, aeronaves tipo B737, DC9, similar o menor porte, penalizando el uso de las posiciones 1 y 2.

Posición 3A, aeronaves tipo B737, DC9, similar o menor porte, penalizando el uso de las posiciones 3 y 4.

EGRESOS

Todas las aeronaves abandonarán la posición en forma autónoma con viraje completo a la derecha.

(DEJADO EN BLANCO INTENCIONALMENTE)

APT

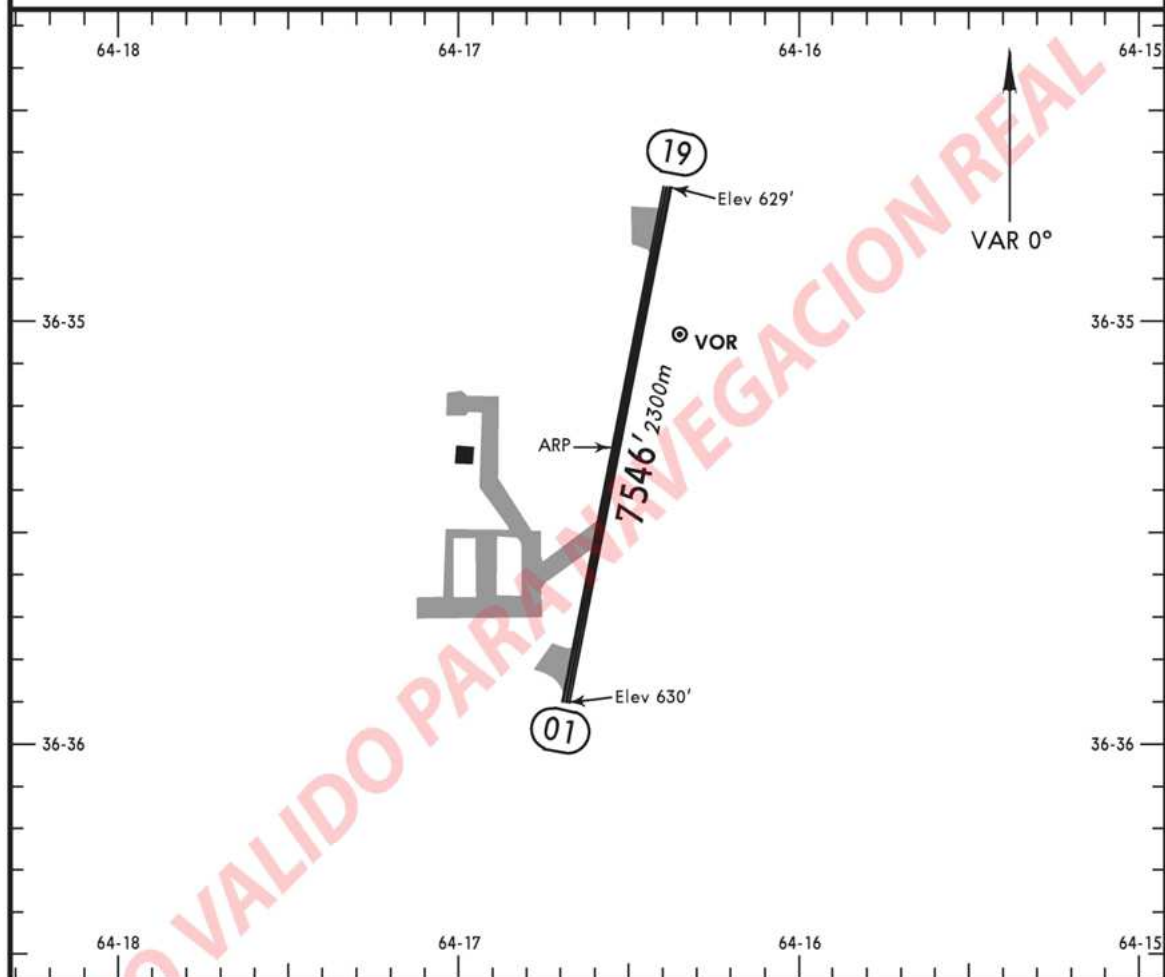
SAZR

Apt Elev **630'**
S36 35.3 W064 16.6

SANTA ROSA, ARGENTINA

SANTA ROSA

*SANTA ROSA Tower 118.3



ADDITIONAL RUNWAY INFORMATION

RWY			USABLE LENGTHS		TAKE-OFF	WIDTH
			Threshold	Landing Beyond Glide Slope		
01	19	RL		6281' 1914m		98' 30m

IAC NO.1 RWY 19

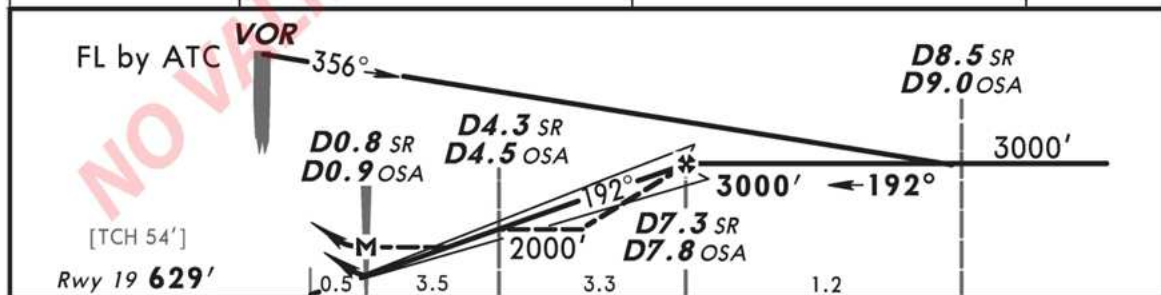
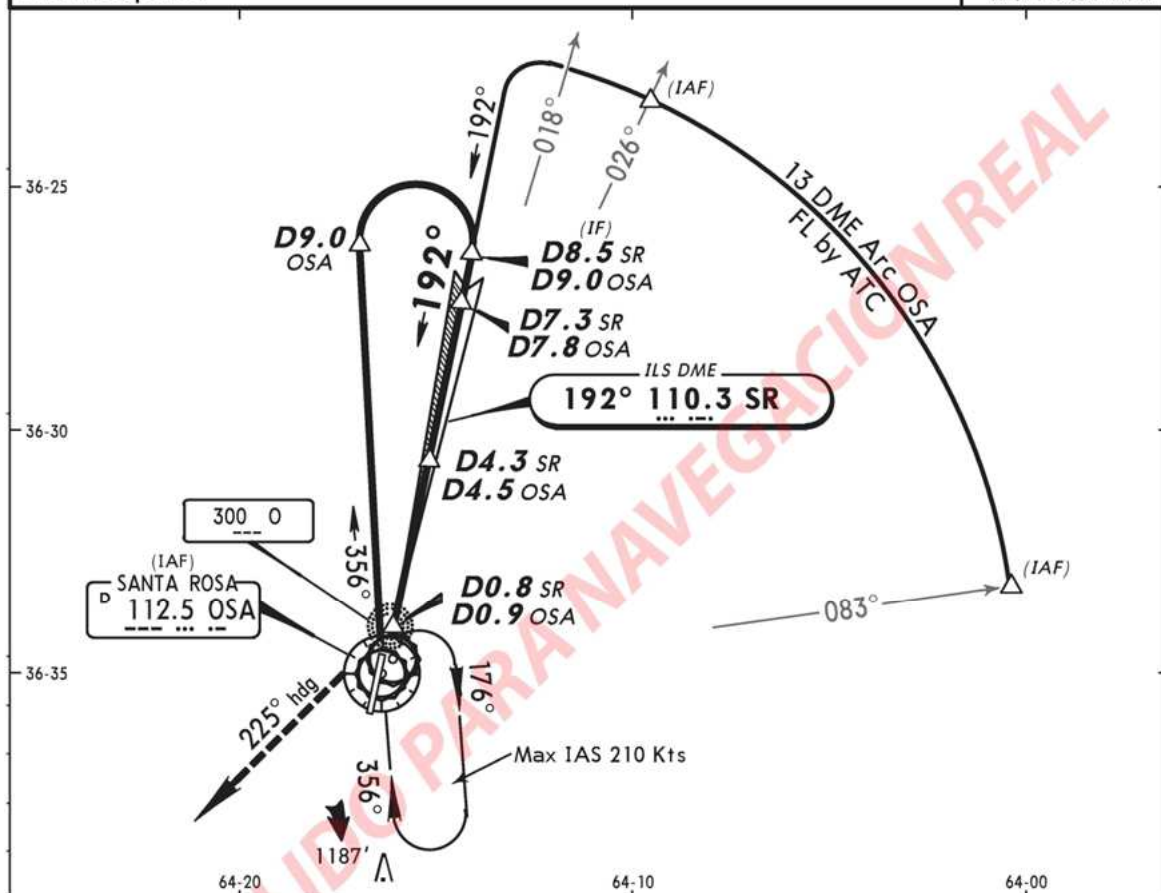
SAZR

SANTA ROSA, ARGENTINA

SANTA ROSA

No. 1
VOR DME ILS DME Rwy 19

				*SANTA ROSA Tower 118.3	
LOC SR 110.3	Final Apch Crs 192°	Minimum Alt D7.3 SR D7.8 OSA 3000' (2371')	ILS DA(H) 880' (251')	Apt Elev 630' Rwy 19 629'	<div>3000'</div> <div>MSA OSA VOR</div>
MISSED APCH: Climb to 1000', then climb to 3000' on heading 225° and follow instructions from CONTROL.					
Alt set: hPa 1. DME required.		Rwy Elev: 23 hPa	Trans level: By ATC	Trans alt: 3000'	



Gnd speed-Kts	70	90	100	120	140	160		
Descent angle [3.00°]	372	478	531	637	743	849		
MAP at D0.8 SR/D0.9 OSA or FAF to MAP	6.7	5:45	4:28	4:01	3:21	2:52	2:31	

STRAIGHT-IN LANDING RWY19			CIRCLE-TO-LAND	
ILS DA(H) 880' (251')		LOC (GS out) MDA(H) 1000' (371')	Not Authorized East of Rwy 01/19	
A B C D	1200m	2000m	Max Kts	MDA(H)
			100	1130' (500')-2000m
			135	1130' (500')-2800m
			180	1230' (600')-3700m
		2400m	205	1330' (700')-4600m

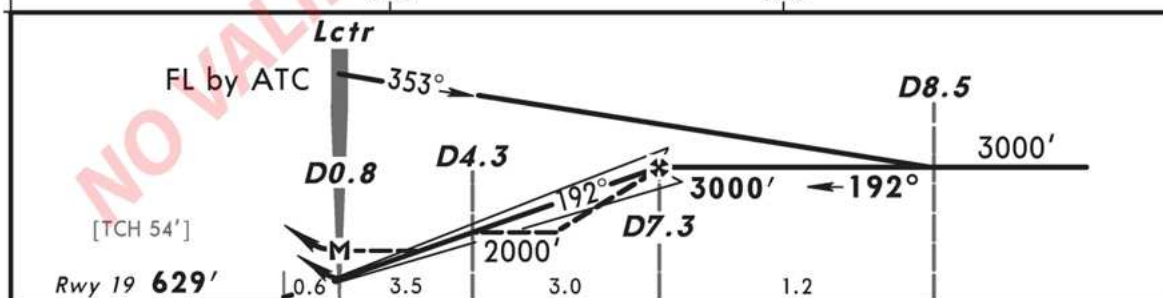
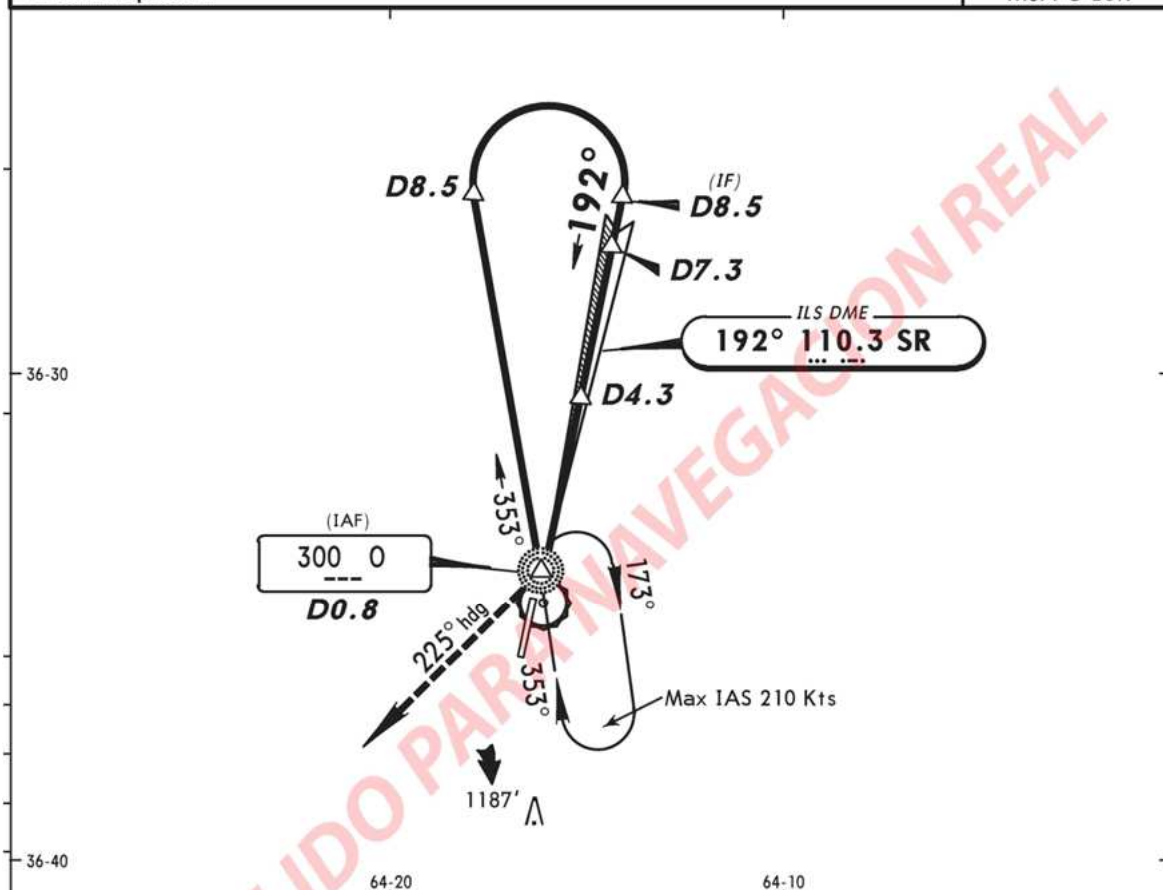
SAZR

SANTA ROSA, ARGENTINA

SANTA ROSA

No. 2
LCTR ILS DME Rwy 19

				*SANTA ROSA Tower 118.3	
LOC SR 110.3	Final Apch Crs 192°	Minimum Alt D7.3 SR 3000' (2371')	ILS DA(H) 880' (251')	Apt Elev 630' Rwy 19 629'	<div>3000'</div> <div>MSA O Lctr</div>
MISSED APCH: Climb to 1000', then climb to 3000' on heading 225° and follow instructions from CONTROL.					
Alt set: hPa Rwy Elev: 23 hPa Trans level: By ATC Trans alt: 3000'					
1. DME required.					



Gnd speed-Kts	70	90	100	120	140	160		
GS	5.08	4.78	5.3	6.3	7.4	8.4		
MAP at Lctr/D0.8 or FAF to MAP	6.5	5:34	4:20	3:54	3:15	2:47	2:26	

STRAIGHT-IN LANDING RWY19			CIRCLE-TO-LAND		
ILS DA(H) 880' (251')		LOC (GS out) MDA(H) 1000' (371')		Not Authorized East of Rwy 01/19	
A B C D	1200m	2000m	Max Kts	MDA(H)	
			100	1130' (500')-2000m	
			135	1130' (500')-2800m	
			180	1230' (600')-3700m	
D	2400m		205	1330' (700')-4600m	

SAZR

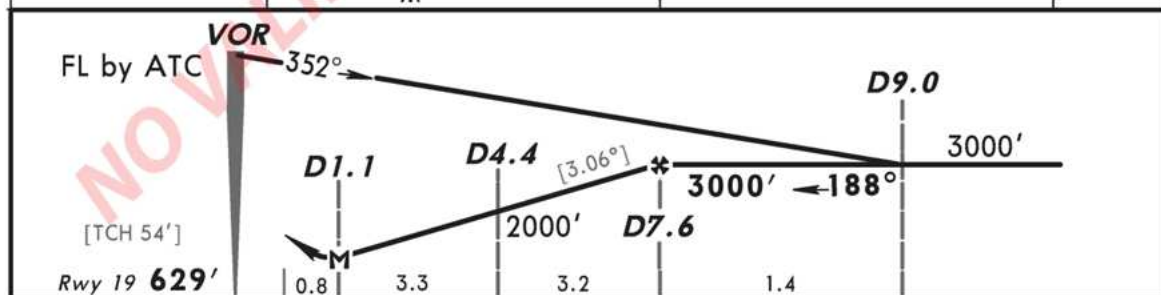
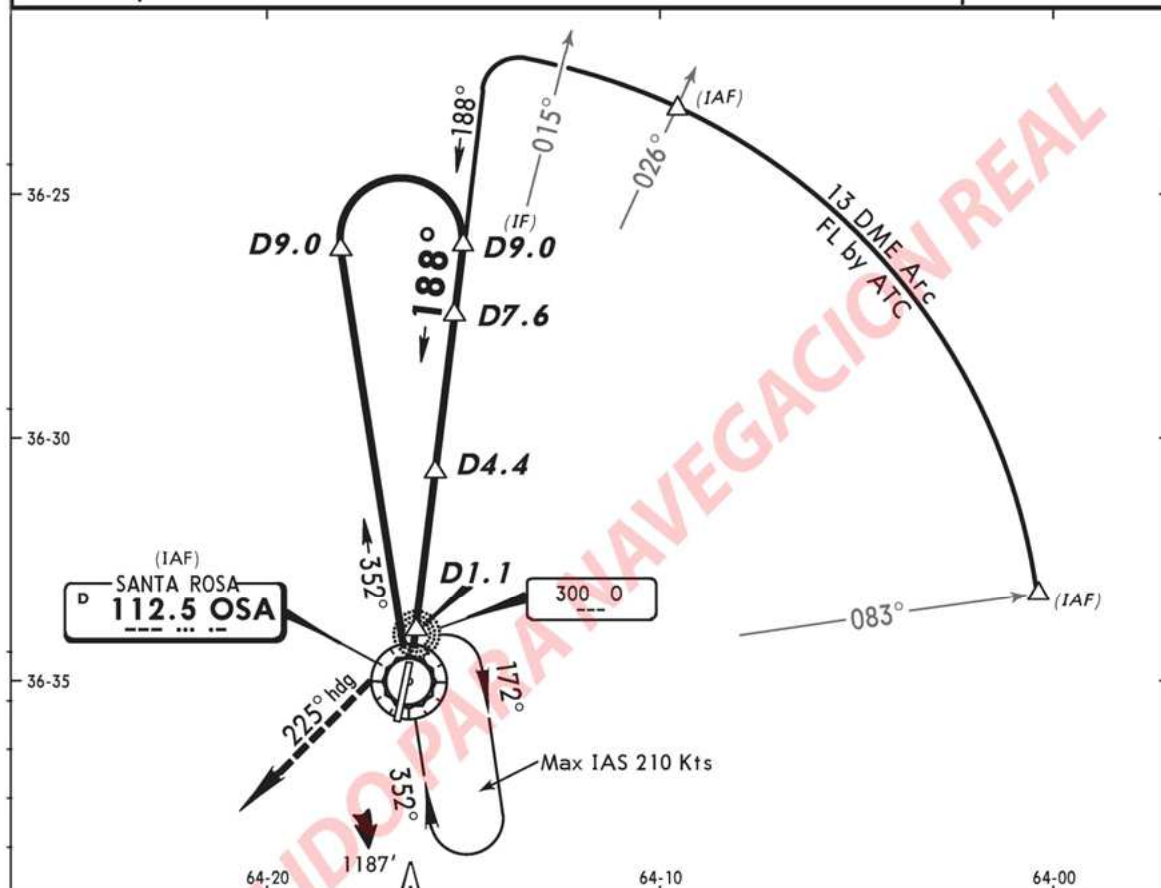
SANTA ROSA, ARGENTINA

SANTA ROSA

No. 3

VOR DME Rwy 19

				*SANTA ROSA Tower 118.3	
VOR OSA 112.5	Final Apch Crs 188°	Minimum Alt D7.6 3000' (2371')	MDA(H) 1000' (371')	Apt Elev 630' Rwy 629'	<div>3000'</div> <div>MSA OSA VOR</div>
MISSED APCH: Climb to 3000' on 225° heading and follow instructions from CONTROL.					
Alt set: hPa Rwy Elev: 23 hPa Trans level: By ATC Trans alt: 3000' 1. DME required.					



Gnd speed-Kts	70	90	100	120	140	160	<div style="border: 1px solid black; padding: 5px;"> 3000' on 225° hdg RT </div>
Descent angle	3.087°	48°	54	650	758	860	
MAP at D1.1 or FAF to MAP	6:53:34	4:20	3:54	3:15	2:47	2:26	

STRAIGHT-IN LANDING RWY 19		CIRCLE-TO-LAND	
MDA(H) 1000' (371')		Not Authorized East of Rwy 01/19	
A	2000m	Max Kts	MDA(H)
B		100	1130' (500') - 2000m
C		135	1130' (500') - 2800m
D		180	1230' (600') - 3700m
	2400m	205	1330' (700') - 4600m

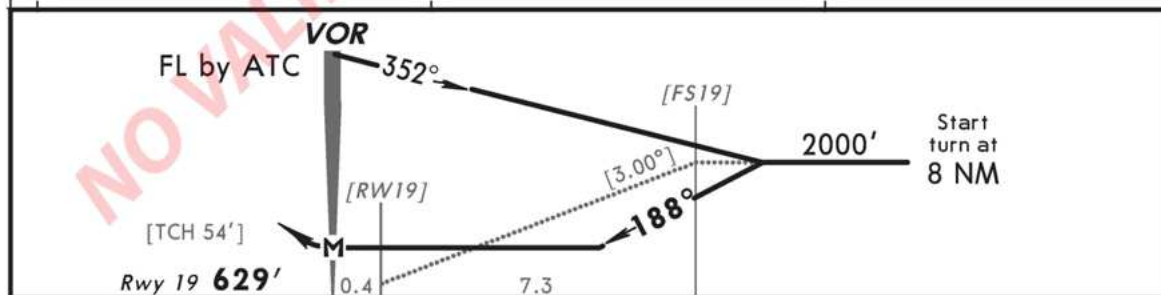
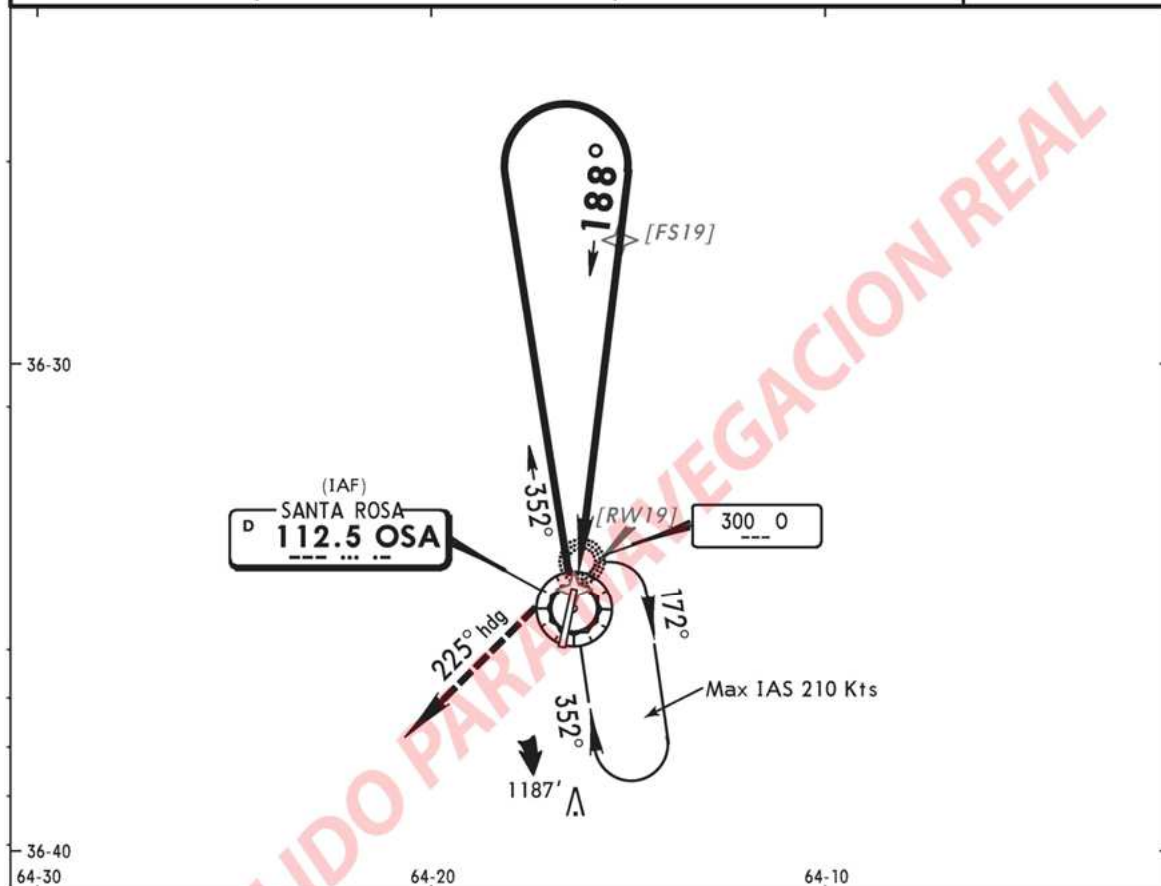
SAZR

SANTA ROSA, ARGENTINA

SANTA ROSA

No. 4
VOR Rwy 19

			*SANTA ROSA Tower		<div><div>3000'</div><div>MSA OSA VOR</div></div>
			118.3		
VOR OSA 112.5	Final Apch Crs 188°	No FAF	MDA(H) 1050' (421')	Apt Elev 630' Rwy 19 629'	
MISSED APCH: Climb to 3000' on 225° heading and follow instructions from CONTROL.					
Alt set: hPa	Rwy Elev: 23 hPa	Trans level: By ATC	Trans alt: 3000'		



Gnd speed-Kts	70	90	100	120	140	160	<div style="display: flex; align-items: center;"> <div style="text-align: center;">3000'</div> <div style="text-align: center;">225° hdg</div> </div>	
Descent angle [3.00°]	372	478	531	637	743	849		

STRAIGHT-IN LANDING RWY19			CIRCLE-TO-LAND	
MDA(H) 1050' (421')			Not Authorized East of Rwy 01/19	
A	2000m		Max Kts 100	MDA(H) 1130' (500')-2000m
B	2400m		135	1130' (500')-2800m
C	2400m		180	1230' (600')-3700m
D	2800m		205	1330' (700')-4600m

SAZR

SANTA ROSA, ARGENTINA

SANTA ROSA

No. 5
LCTR Rwy 19

				*SANTA ROSA Tower 118.3	
Lctr O 300	Final Apch Crs 192°	No FAF	MDA(H) 1050' (421')	Apt Elev 630' Rwy 19 629'	<div style="border: 1px solid black; border-radius: 50%; width: 100px; height: 100px; margin: 0 auto; display: flex; align-items: center; justify-content: center;">3000'</div> <div style="text-align: center; margin-top: 5px;">MSA O Lctr</div>
MISSED APCH: Climb to 3000' on 225° heading and follow instructions from CONTROL.					
Alt set: hPa Rwy Elev: 23 hPa Trans level: By ATC Trans alt: 3000'					

Lctr	FL by ATC	353°	[FN19]	3000'	Start turn at 7 NM
[TCH 54']	M	0.5	6.8	[3.00°]	192°
Rwy 19 629'					

Gnd speed-Kts	70	90	100	120	140	160	<div style="display: flex; align-items: center; justify-content: center;"> <div style="text-align: center; margin-right: 10px;">3000'</div> <div style="text-align: center; margin-right: 10px;">RT</div> <div style="text-align: center;">225° on hdg</div> </div>
Descent angle [3.00°]	372	478	531	637	743	849	
MAP at Lctr							

STRAIGHT-IN LANDING RWY 19		CIRCLE-TO-LAND	
MDA(H) 1050' (421')		Not Authorized East of Rwy 01/19	
A	2000m	Max Kts	MDA(H)
B	2400m	100	1130' (500') -2000m
C	2800m	135	1130' (500') -2800m
D	2800m	180	1230' (600') -3700m
		205	1330' (700') -4600m